



## What Will Happen When I See the Optometrist?

The optometrist will examine your eyes, discuss what has been happening, explore any symptoms you may be experiencing and any related medical history. Please take a list of all current medications and your up to date glasses with you to the appointment.

You are likely to be treated there and then, although you may be referred to your GP if your eye condition is related to your general health.

If required, you may also be referred to hospital.

Following your appointment, the optometrist will send the results to your GP to ensure your medical records are updated. A record of all appointments will also be kept to monitor and improve the service.

You can access the Minor Eye Conditions Service without a referral by getting in touch directly with one of the MECS locations listed in this leaflet. Your GP can also refer you.

Your information will be held confidentially and not shared with a third party without your prior permission.

# Minor Eye Conditions Service (MECS)



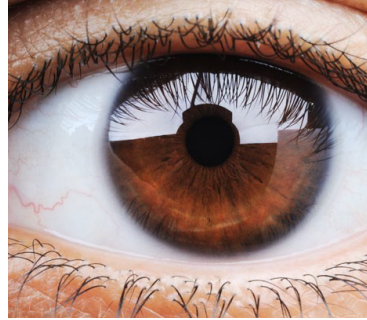
## What is MECS?

A new NHS funded service providing assessment and treatment for eye conditions through your local optometrist. This means that you can be seen by an eye specialist at a time and location that it is convenient for you and reduces the time you have to wait to be treated for a minor eye condition.

## About the Service

MECS is a NHS funded service available to all patients registered with a GP. The service is designed to offer convenient care for minor medical eye conditions.

The service is provided by local optometrists who have specialist knowledge and skills to carry out this work.



**NOTE:** If you have an eye condition that is already being treated by your optometrist or hospital eye service, for example a cataract, glaucoma or diabetic eye disease, this will continue as before and will not be covered by the new service. This service is not a sight test and you will not be issued with a prescription for spectacles. You should continue to visit your usual optician for regular eye examinations and prescriptions as normal.

### Eye Conditions Which **Can Be Treated** by MECS

**The service is designed for recently occurring medical eye conditions such as:**

- Red eye(s)
- Significant recent discharge from or watering from the eye
- Mild trauma, e.g. a scratch to the outer surface of the eye(s) or lid(s)
- Suspected foreign body in the eye
- Mild pain and/or discomfort in the eyes

### Eye Conditions that **Cannot be Treated** by MECS

**Go directly to A&E If you have:**

- Sudden loss of vision in one or both eyes
- Considerable eye pain or trauma
- Chemical injuries or burns
- Recent eye surgery

## How Do I Access MECS?

You can be referred by your GP practice. You can also contact an approved optometrist (those listed in this leaflet) directly (self-refer) and make an appointment. Ask to be seen under the minor eye condition service. Appointments are available during normal working hours and you will be seen within 48 hours but usually on the same day. You are free to contact any of the approved optometrists. However, only approved optometrists can provide this service on the NHS so it may not be your normal optometrist.

## Where Can I Be Seen?

Below is a list of all participating Optometrists in your local area.

Practice	Address	Telephone number
Jane Smellie Opticians	26 High street Whitchurch SY13 1AU	01948-666767
Elleker Opticians	62/63 Mardol Shrewsbury SY1 1PP	01743-344455
Shrewsbury Optometry	4&5 Dogpole Town Centre Shrewsbury SY1 1EN	01743-233486
Specsavers Shrewsbury	24 Claremont Street Shrewsbury SY1 1QG	01743-246360

CHEC does not book appointments, but patients can ring CHEC on 01772 717167 (Monday to Friday, 9am to 5pm) or email [chec.stoptom@nhs.net](mailto:chec.stoptom@nhs.net) to find out where their nearest optometry practice is so that they can attend for the Minor Eye Conditions Service (MECS).

You can use MECS if you are registered with a Shropshire or Telford and Wrekin GP.